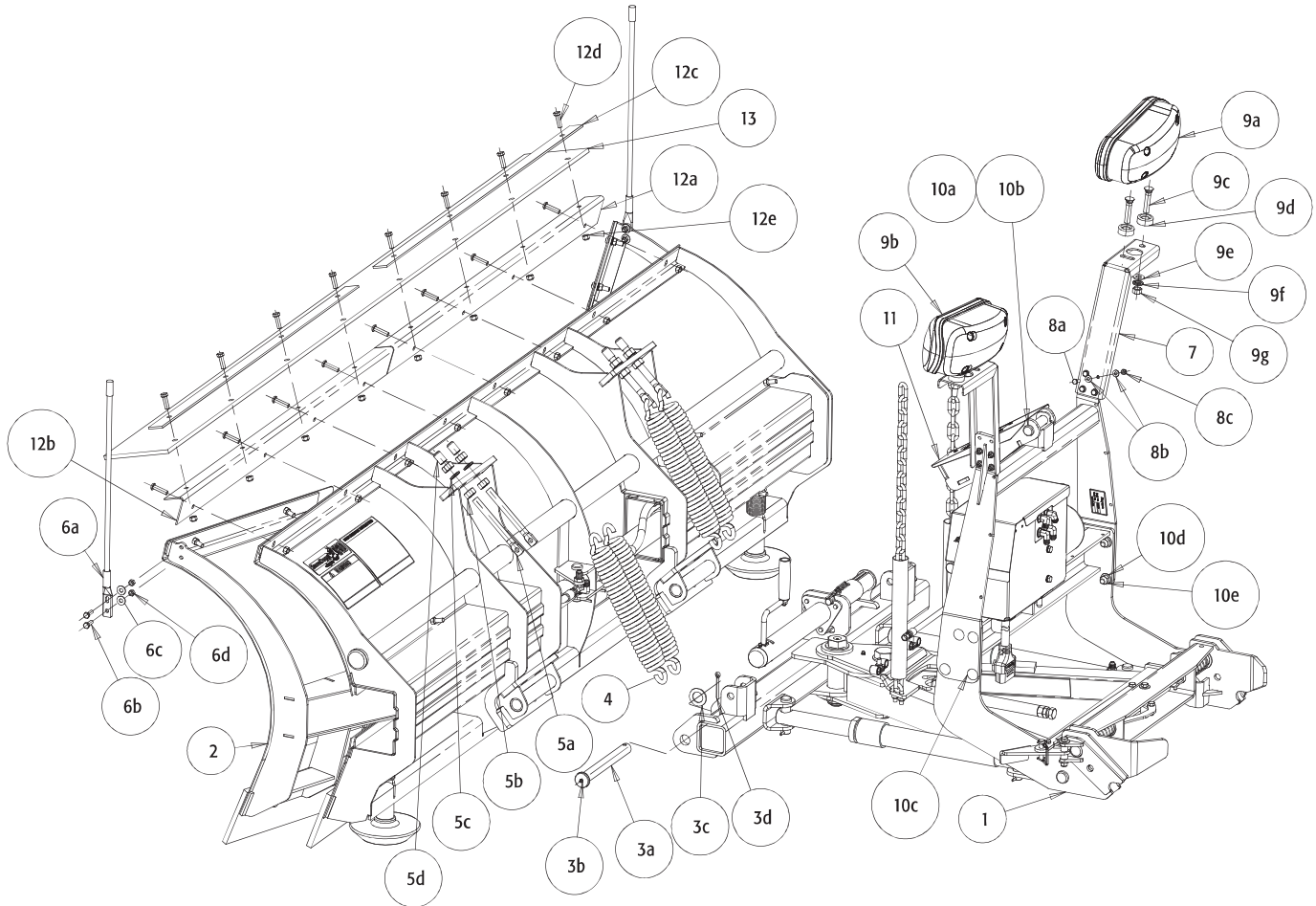


INSTALLATION

SnowDogg snowplows are shipped almost completely assembled to minimize the amount of time from box to plowing. The illustrations are representative only and may differ from your hardware. Please see the parts diagrams for specific part numbers.



ITEM	QTY.	PART NO.	DESCRIPTION
1	1		LIFT FRAME ASSEMBLY
		16019000	XP Lift Frame
2	1		MOLDBOARD ASSEMBLY
		16020920	XP810 Moldboard Assembly
3	1	16101100	TRIP PIN HARDWARE KIT
3a	2		Trip Pin
3b	2		Grease Fitting, 1/4-28
3c	2		Washer, Flat, 1", Zn
3d	2		Pin, Cotter, 1/4 x 2, Zn
4	4	16101200	TRIP SPRING
5	1	16101210	TRIP SPRING HARDWARE KIT
5a	4		Eyebolt, 5/8-11 x 8, SST
5b	8		Nut, 5/8-11, SST
5c	4		Washer, Lock, 5/8, SST
5d	4		Cap, Black Vinyl
6	1	16122100	BLADE GUIDE KIT
6a	2		Blade Guide, Orange, 24"
6b	4		Screw, Cap Hex 5/16-18 x 1, Zn
6c	4		Washer, 5/16 Flat, Zn
6d	4		Nut, Nylock, 5/16-18, Zn
7	2	16111510	LIGHT BRACKETS
8	1	16111512	LIGHT BRACKET HARDWARE KIT
8a	8		Screw, Cap Hex 1/4-20 x 1-1/4 Zn
8b	16		Washer, Flat 1/4 Zn

ITEM	QTY.	PART NO.	DESCRIPTION
8c	8		Nut, Nylock, 1/4-20 Zn
9	1	16160700	LIGHT KIT
9a	1		Ps Side Light
9b	1		Ds Side Light
9c	4		Bolt, Plow Flathead, 1/2-13 x 2.5 Zy
9d	4		Washer, Spherical, Zy
9e	4		Washer, Flat, 1/2 Zy
9f	4		Washer, Lock, 1/2 Zy
9g	4		Nut, 1/2-13 Zy
10	1	16101102	LIFT FRAME HARDWARE KIT
10a	2		Clevis Pin, 7/8" x 4"
10b	2		Cotter Pin, 3/16 x 2"
10c	8		Carriage Bolt, 1/2-13 x 1.5 SS
10d	8		Washer, Flat, 7/16 SS
10e	8		Nut, Nylock, 1/2-13 SS
11	1	16111400	CHAIN LIFT
12	1	16122412	DEFLECTOR BRACKET KIT
12a	1		Bracket, PS, Deflector Mount
12b	1		Bracket, DS, Deflector Mount
12c	2		Clamp Strip, XP Deflector
12d	8		Screw, Socket Button, 3/8-16 x 1.25, SST
12e	8		Nut, Nylock, 3/8-16, SST
13	1	16120157	DEFLECTOR, RUBBER, 90"

Figure A - Lift Frame Diagram

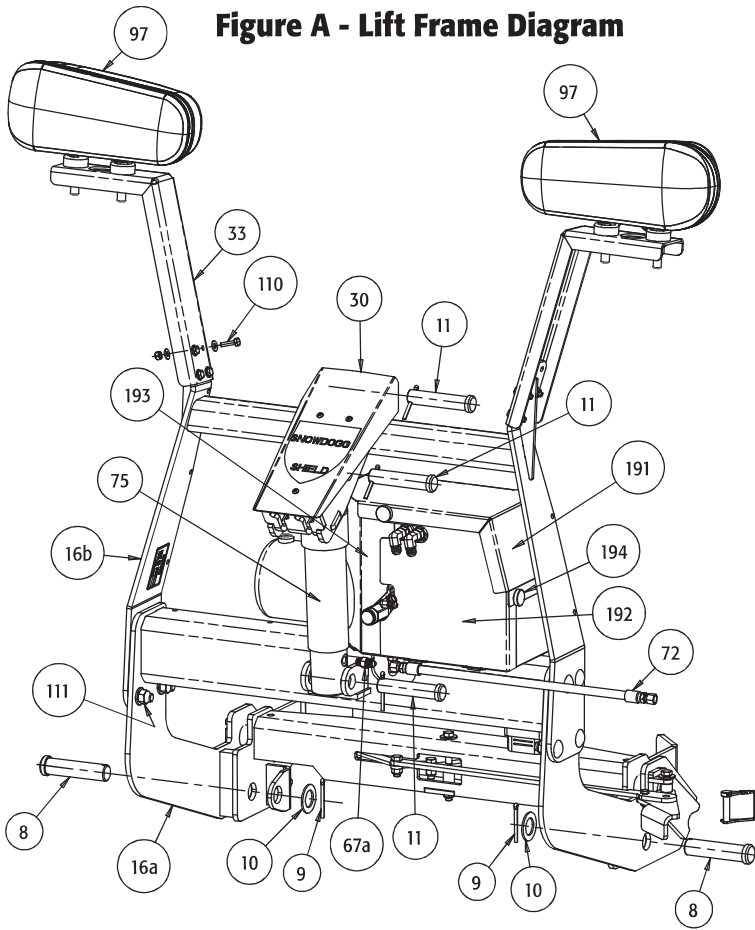


Figure B - Linkage Detail Diagram

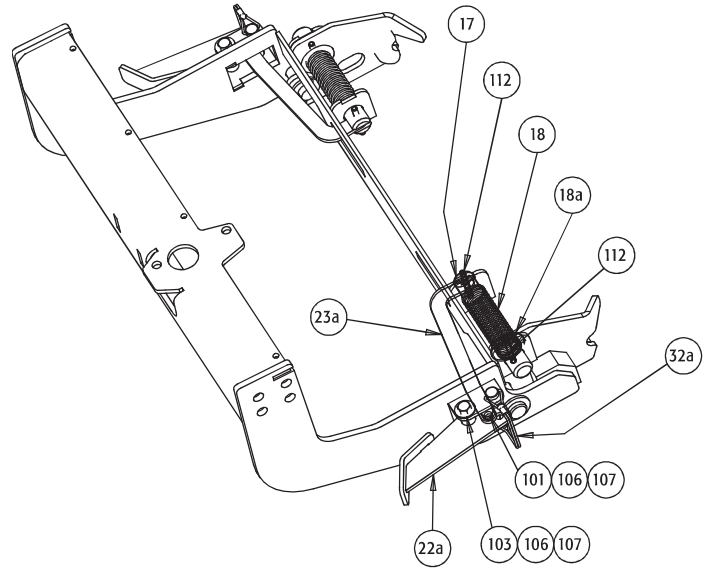


Figure C - Moldboard Diagram

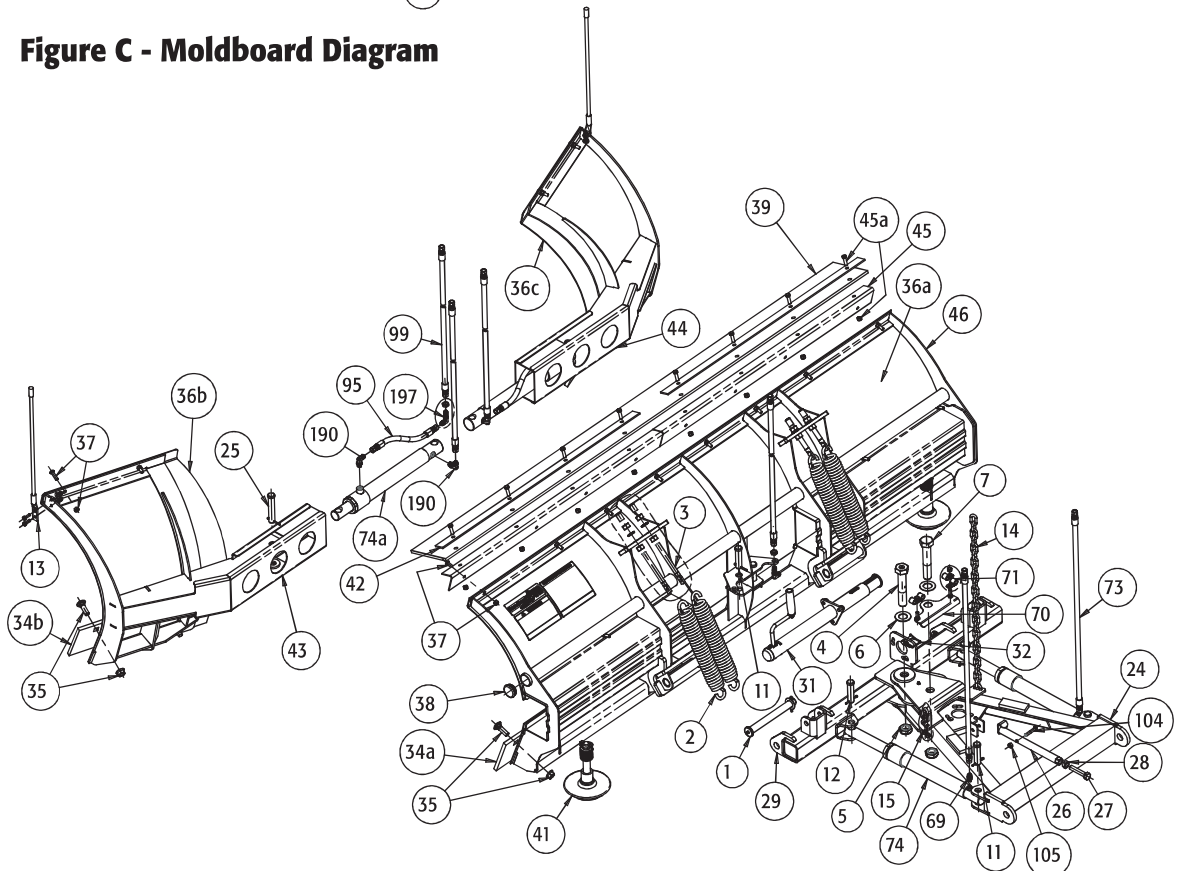


Figure D - Hydraulic Power Unit Diagram

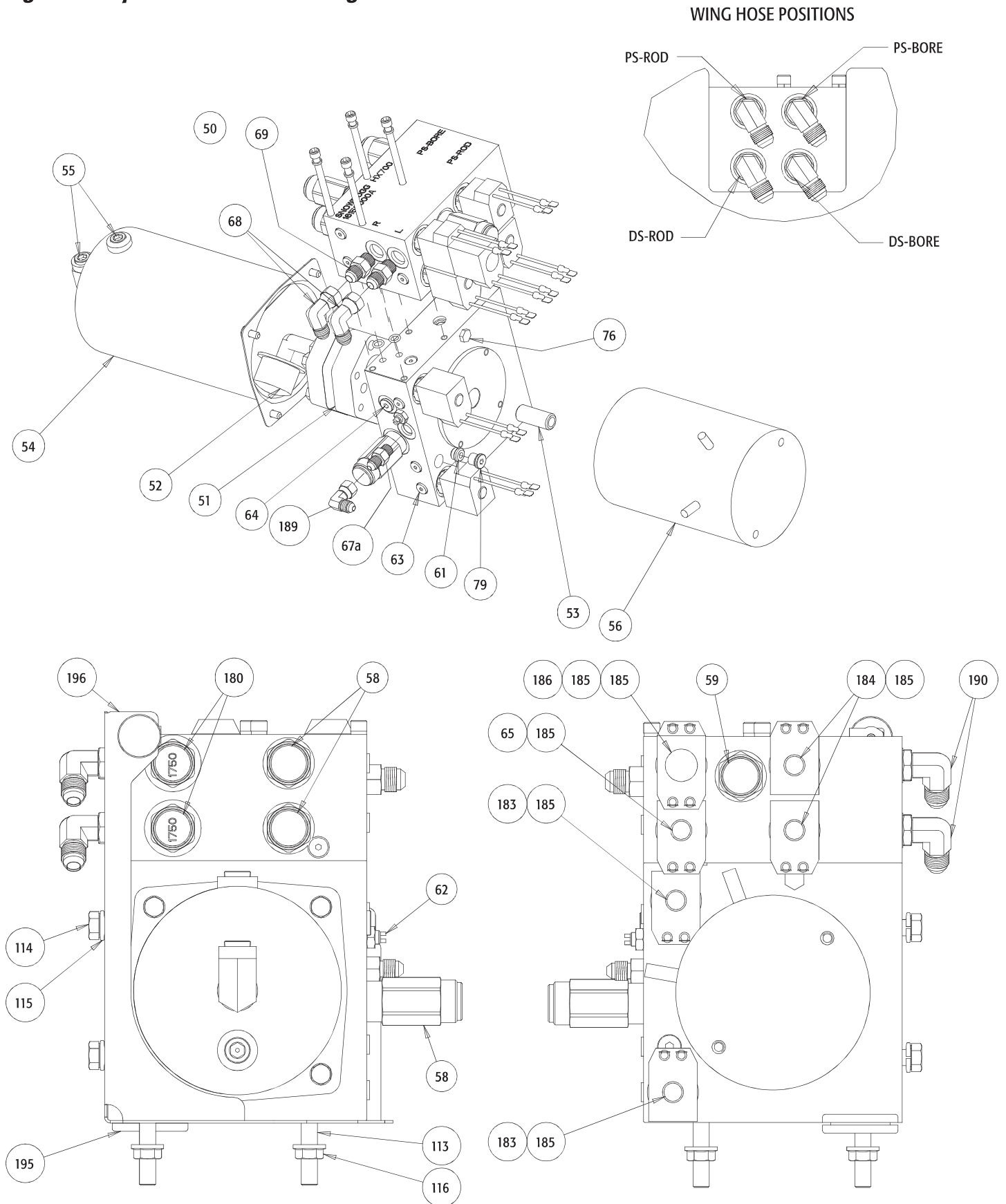


Figure D - Hydraulic Power Unit Wiring Diagram

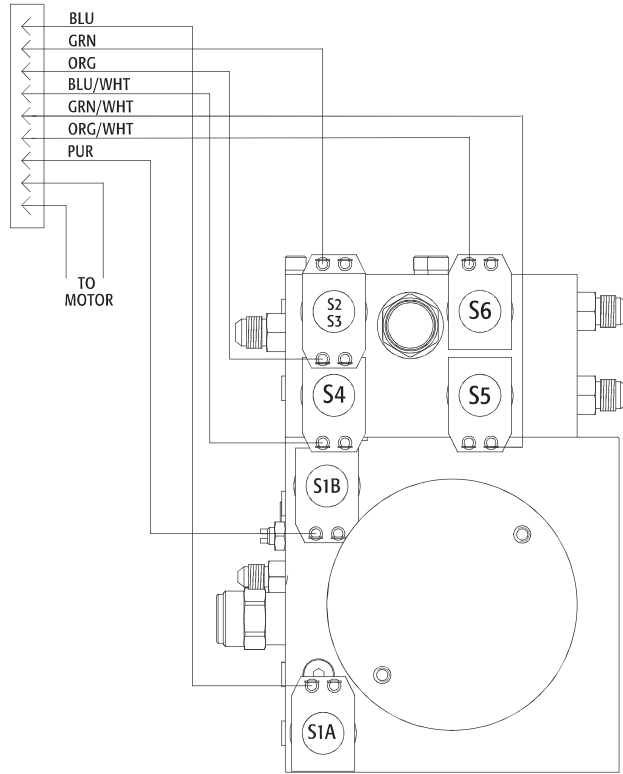
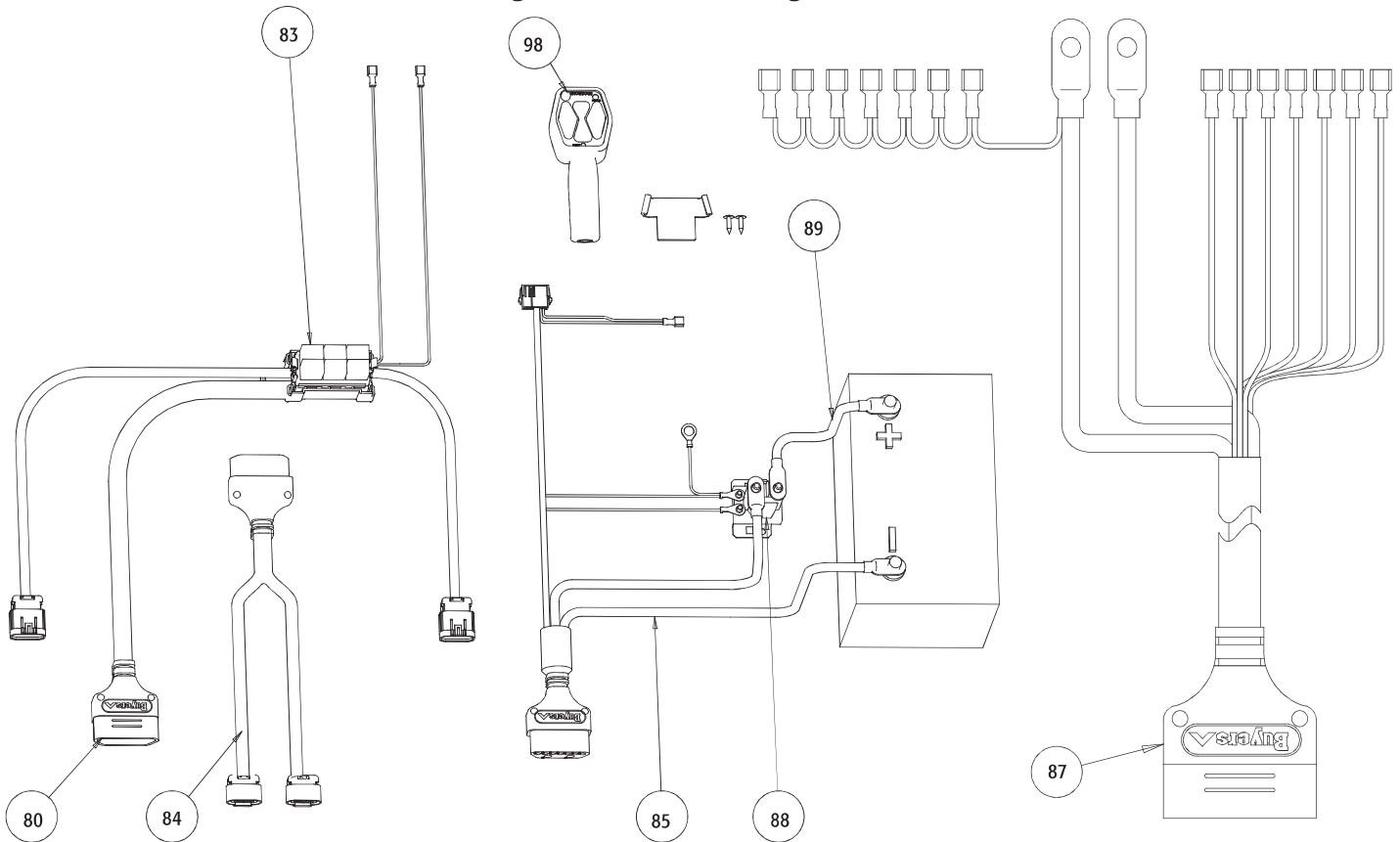


Figure E - Harness Diagram



Parts List

ITEM PART NO. QTY DESCRIPTION

FIGURE A - LIFT FRAME DIAGRAM			
8	16102100	2	Clevis Pin, 1"x4"
9	16102102		Cotter Pin, 3/16"x2"
10	16102104	2	Washer, 1"
11	16102122	3	Clevis Pin Kit, 7/8" x 4"
16a	16110100	1	Lower Lift Frame, Assembled w/ Linkages
16a	16111612	1	Lift Frame, Lower Weldment
16b	16111620	1	Lift Frame, Upper Weldment
30	16111400	1	Chain Lift Arm (assembled)
30	16111402	1	Chain Lift Cover, w/screws
30	16111406	1	Chain Lift Fastener Kit
32	16111120	1	Snapper Pin, 1-5/8in
32a	16111124	2	Snapper Pin, 2-1/2in
33	16111510	2	Bracket, Light
67a	16151325	1	Fitting, Cyl Lift Port
72	16153100	1	Hose, Lift (1/4"x18")
75	16154200	1	Cylinder, Lift (2"x6")
75	16154202	1	Packing Kit, 2" w/Wiper Seal
75	16154204	1	Gland Nut, 2", w/Wiper Seal
97	16160700	1	Light, Plow, Pair
97	16160710	1	Light, Plow, DS
97	16160712	1	Light Housing Only, DS
97	16160720	1	Light, Plow, PS
97	16160722	1	Light Housing Only, PS
97	16160730	2	Hardware Kit, Light Mounting (1 set)
97	16160732	2	Seal, Light Lens to Housing
97	16160734	2	Harness, Light Internal
97	16160740	2	Bulb, H1 High Beam
97	16160742	2	Bulb, H7 Low Beam
97	16160744	2	Bulb, Park/Turn, Amber
110	16111512	1	Light Bracket Fastener Kit (8 Screws/Washers/Nuts)
111	16101014	1	Lift Frame Upper/Lower Fastener Kit
191	16152120	1	Cover, Top, HV600 HPU
192	16152125		Cover, DS Front, XP
193	16152124	1	Cover, PS Front, V
194	16152126	3	Screw, Thumb, HPU Cover

FIGURE B - LINKAGE DETAIL DIAGRAM

17	16111102	2	Pin, Mount Locking
18	16111104	2	Spring, Mount Locking Pin
18a	16111116	2	Washer, Flat
22a	16111117	2	Foot Pedal, Dual
23a	16111115	2	Linkage, Dual Pedal
32a	16111124	2	Snapper Pin, 2-1/2in
101	16101001	2	Screw, Cap, 3/8-16 x 1.00 SST
103	16101003	2	Screw, Cap, 3/8-16 x 3.00 ZN
106	16101006	4	Nut, Nylock 3/8-16 SST
107	16101007	6	Washer, Flat 3/8 SST
112	16111118	4	Roll Pin, 1/4x2.00

FIGURE C - A-FRAME & MOLDBOARD DIAGRAMS

1	16101100	1	Pin, Trip, HD/EX/XP (Pair)
1	16101516	1	Grease Fitting, 1/4-28 Threaded
2	16101200	4	Spring, Trip
3	16101210	2	Spring Mount Eye Bolt Kit (set of 4)
4	16101120	1	Bolt, Pivot w/grease fitting, HD/EX/TE/XP
4	16101515	1	Grease Fitting, Press
4	16101516	1	Grease Fitting, 1/4-28 Threaded
5	16101122	2	Nut, Pivot/Angle Stop Bolt
6	16101124	4	Washer, Pivot/Angle Stop Bolt
7	16101140	1	Bolt, Angle Stop
9	16102102		Cotter Pin, 3/16"x2"
11	16102142	4	Clevis Pin Kit, 7/8" X 3-1/4"

ITEM	PART NO.	QTY	DESCRIPTION
13	16122100	1	Blade Guide Assembly (pr)
14	16103000	2	Chain, Lift
15	16103020	2	U-Bolt Kit, Lift Chain w/nuts
24	16101515	1	Grease Fitting, Press
24	16111200	1	A-Frame, HD/EX/TE/XP
25	16102199	2	Clevis Pin Kit, 7/8 X 4-1/2, W/cotter
26	16111210	1	Prop Stand Assembly (with lift bolt/nut)
27	16111212	1	Bolt, Prop Stand
28	16111214	1	Nut, Jam 5/8-11
29	16111300	1	Sector, HD/EX/XP
31	16111310	1	Jack, A-frame
31	16111312	1	Cap for Jack
32	16111120		Snapper Pin, 1-5/8in
34a	16120920	1	Cutting Edge, XP810 Center
34b	16120922	2	Cutting Edge, XP810 Wing
35	16120114	1	Cutting Edge Fastener Kit (set of 10)
36a	16121920	1	Skin, XP810 Center, SST
36b	16121922	1	Skin, XP810 DS Wing, SST
36c	16121924	1	Skin, XP810 PS Wing, SST
37	16120110	1	Skin Fastener Kit (set of 10)
38	16120120	2	Cap, Crosstube
39	16120157	1	Deflector, Rubber, MD/HD/TE/EX7s, XP810
41	16121100	2	Shoe Assembly
41	16121120	16	Shoe, Washer (1/8")
41	16121140	2	Shoe, Linch Pin
42	16120266	2	Clamp Strip, XP810
43	16122420	1	Moldboard Weldment, XP810 DS Wing
44	16122430	1	Moldboard Weldment, XP810 PS Wing
45	16122412		Deflector Bracket Kit w/Hardware
45a	16122414		Deflector, Hardware Only
46	16122410	1	Moldboard Weldment, XP810 Center
69	16151324	2	Fitting, Mfd/Cyl Angle Straight
70	16111140	1	Bracket, Hose Anchor, SST
71	16111142	2	Clamp Kit, Hose
73	16153110	2	Hose, Angle (3/8"x36")
74	16154100	2	Cylinder, Angle (1-1/2"x12")
74	16154212	2	Packing Kit, 1-1/2" w/Wiper Seal
74	16154214	2	Gland Nut, 1-1/2", w/Wiper Seal
74a	16154300	2	Cylinder, Double Acting (1-1/2"x12")
74a	16154302	2	Seal Kit for 16154300
95	16153140	2	Hose, Wing Retract, 3/8" X 13"
99	16153130	4	Hose, Wing Cylinder, 3/8" x 60"
104	16101004	1	Screw, Cap, 3/8-16 x 2.00 ZN
105	16101005	1	Nut, Nylock 3/8-16
190	16152346	4	Fitting, Elbow, 3/8" JIC M/F
197	16151340	2	Fitting, Bulkhead Elbow, 3/8"

FIGURE D - HYDRAULIC POWER UNIT DIAGRAM

50	16152104	1	Manifold O-ring/Fastener Kit
50	16153000	1	Hydraulic Power Unit, XP
51	16151100	1	Pump, Gear
51	16159116	1	Seal, Shaft
52	16151102	1	Inlet Strainer
53	16152004	1	Spline Coupler
54	16151110	1	Reservoir Kit (Res/Bolts/Seal/Cap)
54	16159114	1	O-ring, Reservoir
55	16151112	2	Plug, Reservoir, 3/8" NPT
56	16151200	1	Motor, 1.6kW
58	16151302	3	Valve, Main Relief
59	16151304	1	Valve, Angle Cross Over Relief
61	16151308	1	Valve, Lift Check
61	16900010		Tool, Lift Check Valve Removal
62	16151310	1	Valve, Lowering Speed

ITEM	PART NO.	QTY	DESCRIPTION
63	16152016	28	Plug, -2 SAE, (1/8")
64	16152018	1	Plug, -4 SAE, (1/4")
65	16151316	1	Valve, 4-WAY/2-POS Solenoid
67a	16151325	1	Fitting, Cyl Lift Port
68	16151322	2	Fitting, Mfd Angle/Lift Elbow
69	16151324	2	Fitting, Mfd/Cyl Angle Straight
76	16151326	1	Breather, Vent
79	16152332	1	Plug, Lift Check Valve
113	16101016	2	Stud, 3/8-16 X 2, ZN
114	16101017	2	Screw, Cap, 3/8-16 x 3/4, ZN
115	16101018	2	Washer, Lock, 3/8, ZN
116	16101019	2	Nut, Serrated Flange, 3/8-16, ZN
180	16151336	2	Valve, Relief, 1750 PSI Differential
183	16151312	2	Valve, S1A/S1B Solenoid
184	16151332	2	Valve, S5/S6 Solenoid
185	16152336	7	Coil, w/flying leads
186	16151334	1	Valve, S2/S3 Solenoid
189	16151321	1	Fitting, Manifold Lift Port 90 Deg Swivel
190	16152346	4	Fitting, Angle Port/Cyl 90°
195	16152128	1	Grommet, HPU Tray
196	16152130	1	Fitting, Mfd Angle/Lift Elbow

FIGURE E - HARNESS DIAGRAM

80	16160100	1	Harness, Truck Relay
80	16160110	1	Repair Connector, 16160100 Grill Connector
80	16160112	2	Repair Connector, 16160100 Adapter Connector
80	16160116	1	Plate, Mounting, Relay Harness
80	16160510	1	Cap, 16160100/16160300
83	16160114	6	Relay, Light, Individual
84	16160200	1	Harness, Plow Light
84	16160512	1	Cap, 16160200/16160400
85	16160300	1	Harness, Truck Control
85	16160310	1	Repair Connector, 16160300 Grill Connector
85	16160510	1	Cap, 16160100/16160300
87	16160402	1	Spring Cage (Kit of 2), Power terminals
87	16160512	1	Cap, 16160200/16160400
87	16162400	1	Harness, Plow Control XP
88	16160410	1	Relay, Motor
89	16160500	1	Cable, Battery
98	16160610		Harness, Controller Extension (36")
98	16160620	1	Mount Kit, SnowDogg Controller
98	16162600	1	Controller, Expanding Plow